

# UP-D23MD

Digital Color Video Printer

The Sony UP-D23MD Digital Color Printer is the ideal choice for the endoscopy and ultrasound markets. At just 8 3/8" wide, the UP-D23MD will help to free up space on medical carts and will allow for easy integration. Although small in size, the UP-D23MD printer offers a wide variety of features including a USB 2.0 High Speed interface for fast and efficient digital connectivity for many modalities, as well as convenient connection to a laptop or office PC. Using Sony's Dye Sublimation printing technology, the UP-D23MD produces near A6 size prints with approximately 400dpi in less than 20 seconds.\*



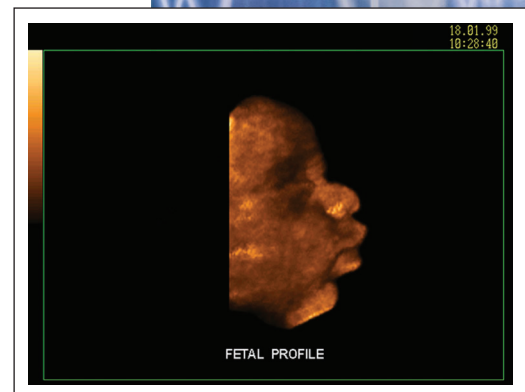
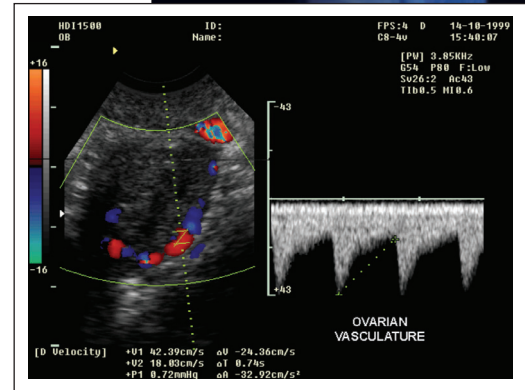
UP-D23MD

- USB 2.0 High Speed Interface
- Slim Compact Design - Ideal for Medical Carts; Easily Integrated
- Excellent Print Quality with Sony's Dye Sublimation Printing Technology
- Gray Balance Adjustment capability
- High Speed Printing - 19 Seconds using Sony Color Print Media - UPC-21S (High speed mode)
- Resize-To-Fit feature allows user to enlarge image
- Worldwide Power Capability
- Convenient Sizes of Media - UPC-21S (3 3/4" x 2 7/8") UPC-21L (5" x 3 5/8")

\*With UPC-21S Media



# SONY®



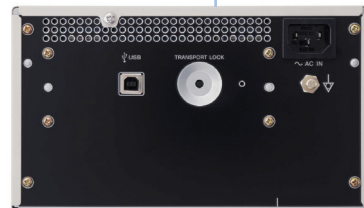
Sony Medical

# UP-D23MD

## Specifications

### UP-D23MD

<b>Printing Method</b>	Dye Sublimation
<b>Thermal Head</b>	403 DPI
<b>Gradations</b>	YMC images process using 8 bits/256 gradations per color, approx. 16.77 million colors per pixel
<b>Resolution</b>	403 DPI
<b>Printed Picture Size</b>	NTSC: S Size: Full 3 3/4" x 2 7/8" L Size: Full 5" x 3 5/8"
<b>Print Speed</b>	NTSC: UPC-21S approximately. 19 sec. (high speed mode) UPC-21L approximately. 29 sec.
<b>Paper Capacity</b>	S Size tray: Max. 80 sheets L Size tray: Max 50 sheets
<b>Power Consumption</b>	100-120 Volts 1.8 A, 220-240 Volts 1.0A
<b>Dimensions</b>	8 3/8" x 5" x 15 5/8" (WHD)
<b>Weight</b>	14.5lbs.
<b>Control Terminal</b>	USB 2.0 High Speed Interface
<b>Media</b>	UPC-21L (L size standard color print pack) (4 x 50 packs) UPC-21S (S size standard color print pack) (3 x 80 packs)
<b>Safety Standards</b>	UL 1950 and UL 2601-1 Listed, CSA C22.2 No. 601.1, No. 950, EN60950, EN60601-1
<b>Supplied Accessories</b>	AC Power Cable Instruction Manual Warranty Card Paper Tray (L Size) Printing Media (UPC-21L, 50 sheets & 1 ribbon) CD-ROM (Printer Driver, ICC Profile) USB Cable
<b>Optional Accessories</b>	Printing Media (UPC-21L, UPC-21S) Slide Adapter: (UPA-21SA)



UP-D23MD Back Panel



UPC-21L



UP-21S

**SONY**

Sony Electronics Inc.  
1 Sony Drive, Park Ridge, NJ 07656

[www.sony.com/medical](http://www.sony.com/medical)



©2003 Sony Electronics Inc. All rights reserved. Reproduction in whole or in part without written permission is prohibited. Features and specifications are subject to change without notice.  
All non-metric weights and measures are approximate. Sony and Print by Sony are trademarks of Sony. All other trademarks are the property of their respective owners.  
Caution: Federal (USA) law restricts this device to sale by or on the order of a physician or other appropriately licensed medical professional.  
Caution: See product labeling for indications, contraindications, warnings, cautions and directions for use.

ME-UPD23MD